

Enhance System Management for dPMR™ Mode 3 System

The RS-MGR2 is a system management software tool for monitoring the operating status of dPMR Mode 3 trunking sites. Install the software in a server PC and client users can be accessed through a WEB browser. The RS-MGR2 provides real-time monitoring, system alerts and log search functions for the dPMR Mode 3 system.



General Features

Multi-Client: The RS-MGR2 allows creating up to 20 user accounts and giving three types of access rights to each user account.

Multi-lingual Setting: By creating a translation table, menu items can be customized to be shown in localized language. The language is selectable by user account.

E-mail Alert: The user can select error factors beforehand, and an e-mail alert can be sent to the user if any of the error factors occur or clears.

Map Function: Repeater site icons laid out on an image file such as a map or network diagram for monitoring real-time channel activity in each site. If an error or disconnect occurs, the repeater icon flashes in red as a notification.

Real-time Monitoring

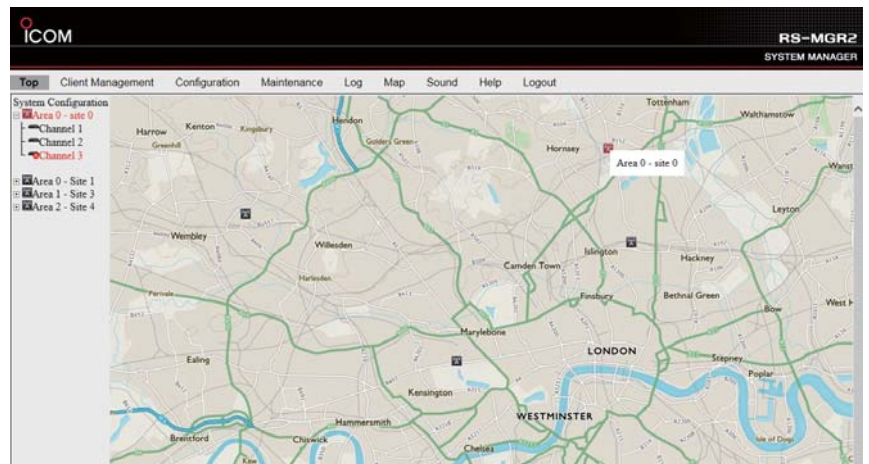
Repeater View: The Repeater View shows the channel status (running, error or offline), transmitting or receiving status with RSSI, callers ID in progress, frequency and IP address settings.

Repeater Status: The Repeater Status shows internal conditions of each repeater channel including voltage, temperature, PLL unlock, transmitting power and other repeater health information.

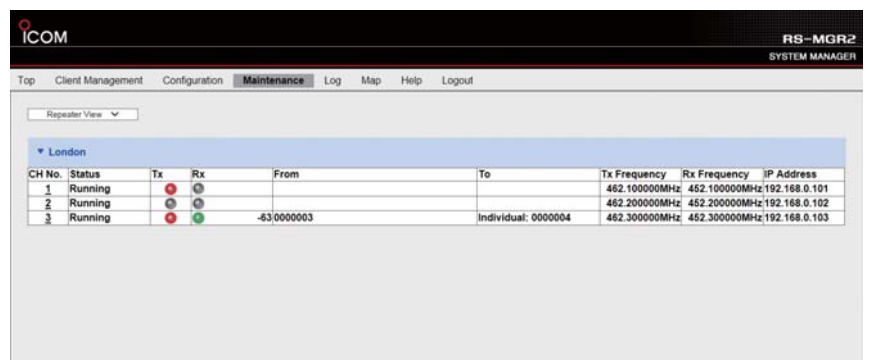
Repeater Condition: The Repeater Condition shows a record of alerts on a repeater channel.

Activity Screen: The Activity screen shows current alert conditions in the system.

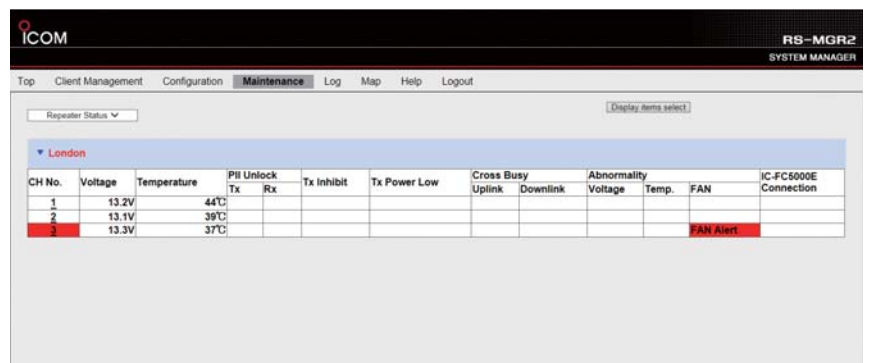
System Connection: The System Connection shows the network connection status with the repeater site or other CS-FC5000SCS.



Map Function



Repeater View



Repeater Status

Log Functions

Registration Log, Communication Log, Traffic Log and Search Log can be searched and downloaded with extensive filter settings. The collected log data can be downloaded in CSV format with a ZIP archive.

Registration Log:

Shows the Registration Log of an individual unit.

Communication Log:

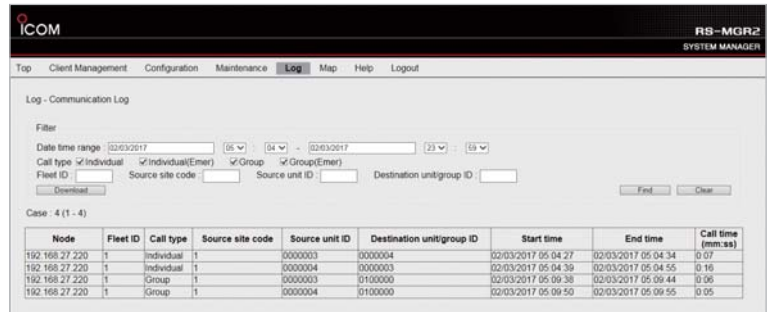
Shows the call time log with call type.

Traffic Log:

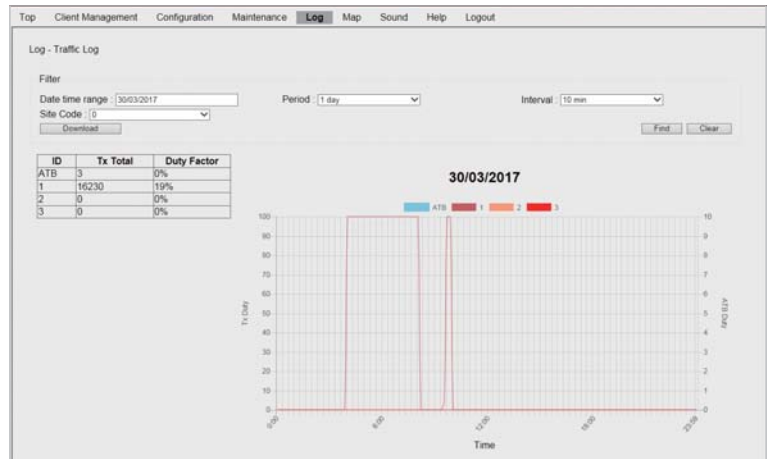
Shows the duty factor (total Tx time period as a percentage of the time) of each repeater site in a graphic chart.

Auto Log Archive Function:

The log data can be compressed for saving disk space by setting the expiry date from 1 month to 12 months.



Communication Log



Traffic Log

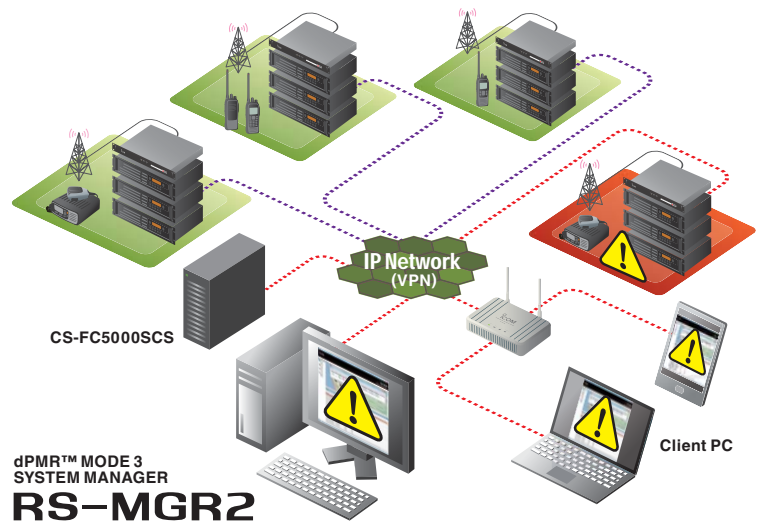
System Requirements

PC with software installed

• Operating system:	Windows Server® 2012 R2, 2012, Windows® 10, 8.1, 7 SP1 or later (Except Windows RT)
• CPU:	2 GHz Dual core or greater
• Memory:	2 GB or more
• Hard disk space:	500 GB of minimum disk space
• LAN:	100 Mbps or faster (Fixed IP address)
• Monitor:	1280 x 1024 or better resolution

Client PC

• Web browser:	Internet Explorer® 11 Running on Windows® recommended
----------------	--



dPMR™ MODE 3 SYSTEM MANAGER
RS-MGR2

All stated features, appearances, screen shots and specifications may be subject to change without notice. Icom, Icom Inc. and the Icom logo are registered trademarks of Icom Incorporated (Japan) in Japan, the United States, the United Kingdom, Germany, France, Spain, Russia, Australia, New Zealand, and/or other countries. IDAS logo is a trademark of Icom Incorporated. dPMR and the dPMR logo are trademarks of the dPMR MoU Association. Windows, Windows Server and Internet Explorer are either registered trademarks or trademarks of Microsoft Corporation in the United States and/or other countries. Contains OS data © Crown copyright and database right (2017). All other trademarks are the properties of their respective holders.

Icom Inc. 1-1-32, Kamiminami, Hirano-Ku, Osaka 547-0003, Japan Phone: +81 (06) 6793 5302 Fax: +81 (06) 6793 0013 www.icom.co.jp/world **Count on us!**

Icom America Inc.
12421 Willows Road NE,
Kirkland, WA 98034, U.S.A.
Phone: +1 (425) 454-8155
Fax: +1 (425) 454-1509
E-mail: sales@icomamerica.com
URL: <http://www.icomamerica.com>

Icom (Europe) GmbH
Communication Equipment
Auf der Krautweide 24
65812 Bad Soden am Taunus, Germany
Phone: +49 (6196) 76685-0
Fax: +49 (6196) 76685-50
E-mail: info@icom-europe.com
URL: <http://www.icomeurope.com>

Icom France s.a.s.
Zac de la Plaine,
1 Rue Brindejone des Moulins, BP 45804,
31505 Toulouse Cedex 5, France
Phone: +33 (5) 61 36 03 03
Fax: +33 (5) 61 36 03 00
E-mail: icom@icom-france.com
URL: <http://www.icom-france.com>

Shanghai Icom Ltd.
No.101, Building 9, Caifuxingyuan Park,
No.186 Maoling Road, Chedun Town,
Songjiang District, Shanghai, 201611, China
Phone: +86 (021) 6153 2768
Fax: +86 (021) 5765 9987
E-mail: bjicom@bjicom.com
URL: <http://www.bjicom.com>

Your local distributor/dealer:

Icom Canada
Glenwood Centre #150-6165
Highway 17A, Delta, B.C.,
V4K 5B6, Canada
Phone: +1 (604) 952-4266
Fax: +1 (604) 952-0090
E-mail: info@icomcanada.com
URL: <http://www.icomcanada.com>

Icom Spain S.L.
Ctra. Rubi, No. 88 "Edificio Can Castanyer"
Bajos A 08174, Sant Cugat del Valles,
Barcelona, Spain
Phone: +34 (93) 590 26 70
Fax: +34 (93) 589 04 46
E-mail: icom@icomspain.com
URL: <http://www.icomspain.com>

Icom (Australia) Pty. Ltd.
Unit 1 / 103 Garden Road,
Clayton, VIC 3168 Australia
Phone: +61 (03) 9549 7500
Fax: +61 (03) 9549 7505
E-mail: sales@icom.net.au
URL: <http://www.icom.net.au>

Icom Brazil
Rua Itororó, 444 Padre Eustáquio
Belo Horizonte MG,
CEP: 30720-450, Brazil
Phone: +55 (31) 3582 8847
Fax: +55 (31) 3582 8987
E-mail: sales@icombrasil.com

Icom (UK) Ltd.
Blacksale House, Altira Park,
Herne Bay, Kent, CT6 6GZ, U.K.
Phone: +44 (0) 1227 741741
Fax: +44 (0) 1227 741742
E-mail: info@icomuk.co.uk
URL: <http://www.icomuk.co.uk>

Asia Icom Inc.
6F No. 68, Sec. 1 Cheng-Teh Road,
Taipei, Taiwan, R.O.C.
Phone: +886 (02) 2559 1899
Fax: +886 (02) 2559 1874
E-mail: sales@asia-icom.com
URL: <http://www.asia-icom.com>